

A variety of corporate information is available on our global website.

Provides a general overview of the business, as well as information on corporate governance and other topics.

### NIKON REPORT

<https://www.nikon.com/company/ir/management/nykon-report/>



Introduces the company's commitment to realizing a sustainable society.

### NIKON SUSTAINABILITY REPORT

<https://www.nikon.com/company/sustainability/report/>



Includes product technologies, externally evaluated papers, and other results from our R&D activities.

### Nikon Research Report

<https://www.nikon.com/company/technology/rd/#nrr>



Progress Report on Medium-Term Management Plan FY2022 to FY2025 and scenes from the conference.

### Medium-Term Management Plan

<https://www.nikon.com/company/ir/management/midtermbusiness/>



## NIKON MUSEUM

The Nikon Museum showcases Nikon's history, products, and technologies at one site.

<https://www.nikon.com/company/corporate/museum/>



**NIKON CORPORATION**  
1-5-20 Nishiui, Shinagawa-ku, Tokyo 1408601, Japan  
[www.nikon.com](http://www.nikon.com)

Information in this company profile is valid as of October 25, 2024.



# COMPANY PROFILE



# Corporate Philosophy, Vision

## OUR CORPORATE PHILOSOPHY

### Trustworthiness and Creativity

Our corporate philosophy is "Trustworthiness and Creativity."  
 These are simple words, but they are not easily put into practice.  
 These important words represent unchanging principles  
 to which we will always be dedicated.

## OUR VISION

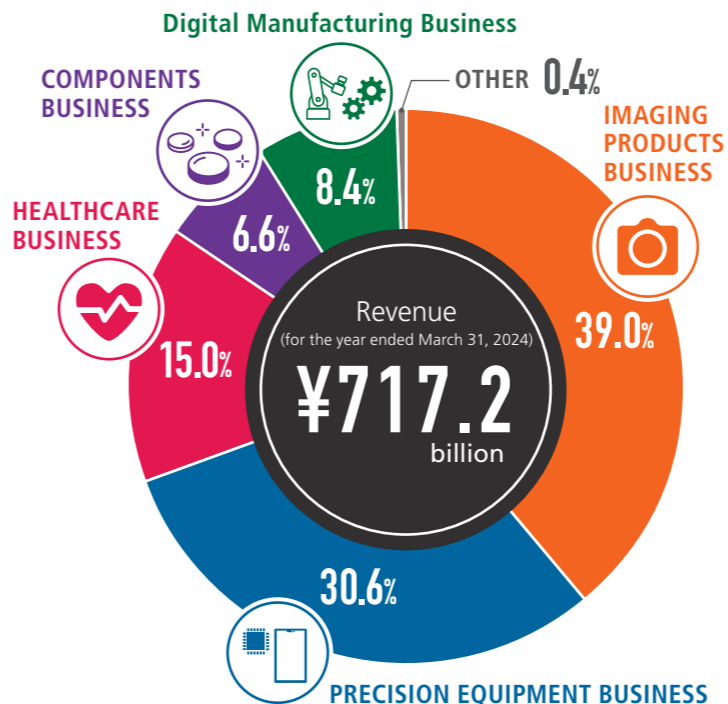
### Unlock the future with the power of light

Unleashing the limitless possibilities of light.  
 Striving to brighten the human experience.  
 Focused, with purpose, on a better future for all.  
**THIS IS THE ESSENCE OF NIKON.**

# Company Information

## Ratio of Revenue by Segment

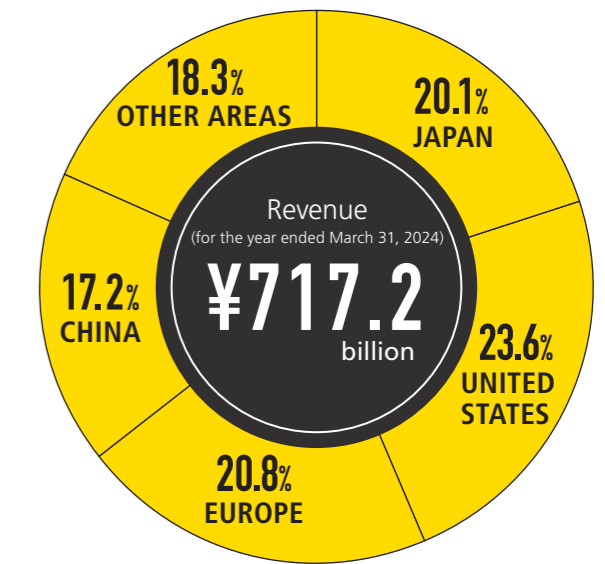
(for the year ended March 31, 2024)



\* The chart reflects the business segments in March 2024.

## Ratio of Revenue by Region

(for the year ended March 31, 2024)



Nikon maintains a global presence with approximately 100 offices around the world, including in Japan, the United States, Europe, and Asia.



## COMPANY PROFILE

<b>Corporate Name</b>	NIKON CORPORATION	<b>Outline of Business</b>	Manufacture and sales of optical instruments
<b>Head Office</b>	1-5-20 Nishioi, Shinagawa-ku, Tokyo 1408601, Japan Tel: +81-3-3773-1111	<b>Capital</b>	¥65.5 billion (as of March 31, 2024)
<b>Representative Director President</b>	Representative Director and Chairman Toshikazu Umatate	<b>Revenue</b>	(consolidated) ¥717.2 billion (as of March 31, 2024)
<b>Date of Establishment</b>	July 25, 1917	<b>Number of Employees</b>	(consolidated) 19,444 (as of March 31, 2024)
		<b>Plants (Nikon Corp.)</b>	Yokohama, Sagami-hara, Kumagaya, Mito and Yokosuka



# Medium-Term Management Plan (FY2022-2025)

Nikon set a goal of "Vision 2030," and has formulated the Medium-Term Management Plan (FY2022-2025) as the first phase to achieve that goal. We aim to sustain corporate value growth through initiatives in line with the Plan.

## Vision 2030

A key technology solutions company in a global society where humans and machines co-create seamlessly

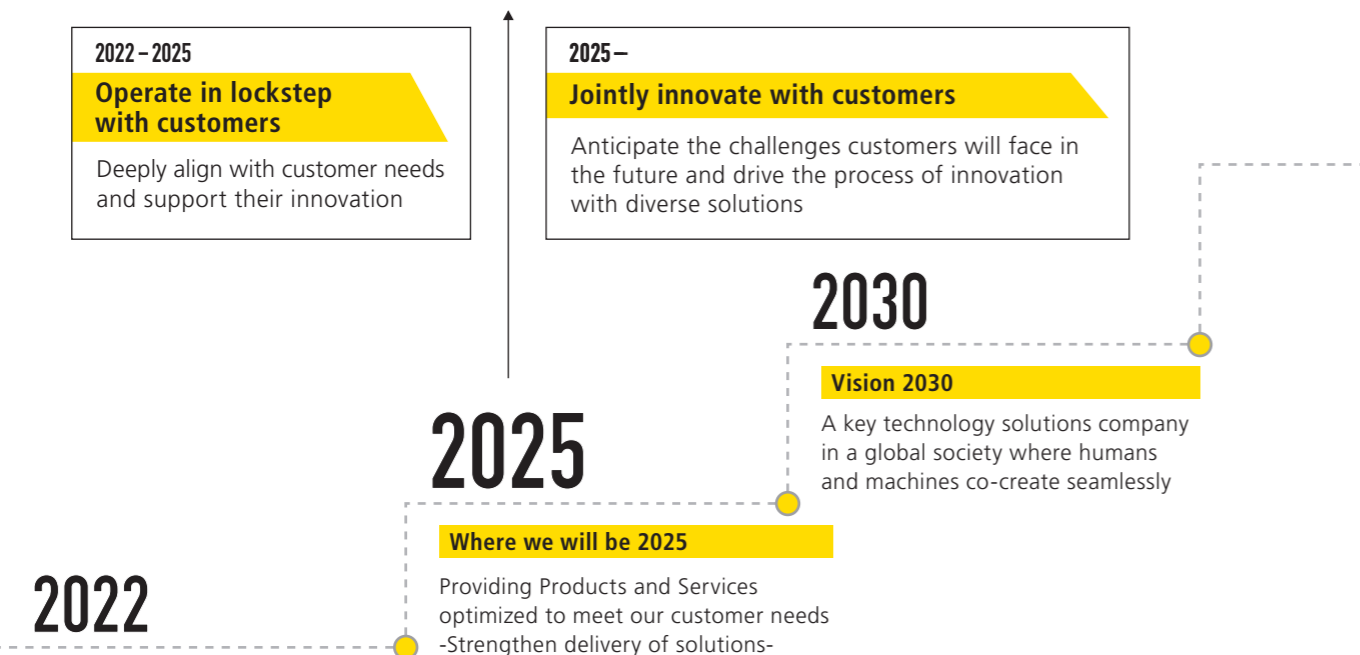
Nikon will provide innovative technology solutions that anticipate and meet our global customer needs and contribute to a better sustainable world where humans and machines co-create seamlessly to solve societal challenges.

### Quality of Life × Industry

It is expected that great changes (megashifts) will occur in society in 2030, ranging from people's values to social frameworks such as climate change and technology. Nikon will identify the diverse needs of the society this produces, and stay ahead of the curve, contributing to society in two fields of value proposition.

Make lives better Quality of Life (QOL) domain		Expand possibilities for people Industry domain		
Imaging	Healthcare	Precision Equipment	Components	Digital Manufacturing

## Steps to Get to Vision 2030



## An Overview of the Medium-Term Management Plan

[ Where we will be in 2025 ]

Providing Products and Services optimized to meet our customer needs

### Direction for the entire company

**Strengthen delivery of integrated solutions** to grow the business in a stable manner, expand both revenues and profits, and continually generate social and economic value

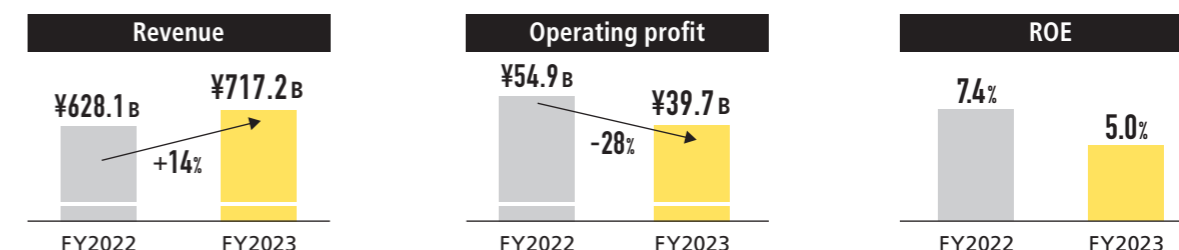
## FY2025 Financial Targets

We will increase strategic businesses that account for 35% of revenues, and achieve total revenue of ¥700.0B. In addition, we will sustain our Main Businesses and grow earnings in Strategic Businesses to achieve total operating margin of 10%, namely ¥70.0B or more.

Revenue	Operating margin	ROE
<b>¥700.0B</b>	<b>10%+</b>	<b>8%+</b>

### Performance for FY2023

Achieved revenue target of ¥700.0B for FY2025 ahead of schedule.



## FY2024 onward: Maintain framework of the Medium-term Management Plan while strengthening strategies and management to assure achievement

Adapting to environmental changes	Reviewing earnings composition by business	
Toward FY2030	QOL — Pursuing upside	Industry — Rationalization of operating structure to avoid downside
	① Review growth investments and expand investments in organic growth	② Strengthen management base

Increase customer acquisition through new customer development and collaboration. Refine value proposition and expand earnings

Quality of Life (QOL)		Industry		
Imaging	Healthcare	Precision Equipment	Components	Digital Manufacturing
Capture youth and other new users	Develop customers in private sector	Expand stable customer base	Support customers mainly in semiconductor-related areas	Capitalize on demand in new growing markets

# Outline of Business

Nikon offers a wide range of products and solutions, including cameras, FPD lithography systems, semiconductor lithography systems, microscopes, optical components, metal 3D printers, and measurement and inspection systems.

Nikon provides a variety of products, services, and solutions worldwide, based on advanced opto-electronics and precision technologies cultivated over more than 100 years of history. To meet the diversifying and sophisticated needs of society with solid technical capabilities, we have established a flexible manufacturing system throughout the Nikon Group. Nikon will continue to contribute to the enrichment of daily life and society through the creation of new values, supporting the development of imaging culture and the realization of a super-smart society, as well as improving quality of life and assisting varied forms of manufacturing.

<b>Imaging Products Business</b> Creating a richer and more diverse imaging culture.	<b>Z9</b> [Mirrorless Camera] Flagship mirrorless model with Nikon's preeminent still image, video functionality and performance.	<b>Z6III</b> [Mirrorless Camera] The world's first to adopt a partially-stacked CMOS sensor, the small body ensures cutting-edge features and performance.	<b>NX Field</b> [Remote Shooting System for Professional Agencies] Multiple cameras can be linked to support remote shooting and image transmission.	<b>WX 7 × 50 IF</b> [Binoculars] An ultra-wide field of view realized by combining Nikon's leading-edge optical technologies and a passion for manufacturing.
	<b>Zf</b> [Mirrorless Camera] The essence of the design, usability, and genuine excitement of photography derived from the FM2 film camera, implemented as a cutting-edge mirrorless model.	<b>NIKKOR Lenses</b> [Interchangeable Lenses for Cameras] Lens lineup includes NIKKOR Z lenses that realize a new dimension in optical performance and diverse NIKKOR F lenses.	<b>COOLSHOT PRO II STABILIZED</b> [Laser Rangefinder] Equipped with the STABILIZED function and red internal OLED display. Ease of measurement has been even further improved.	<b>MONARCH Fieldscope 82ED-S</b> [Fieldscope] Sophisticated optical performance ensures a sharp and clear field of view.

<b>Precision Equipment Business</b> Contributing to the realization of a super-smart society.	<b>FPD LITHOGRAPHY BUSINESS</b>		<b>SEMICONDUCTOR LITHOGRAPHY BUSINESS</b>	
	<b>FX-88S</b> [FPD Lithography System] Gen 8 Plate FPD Lithography System. Supporting panels for high value-added premium displays, such as smart devices, high-end monitors, and large TVs.	<b>NSR-S636E</b> [ArF Immersion Scanner] Lithography system for critical layers that accomplishes high levels of both overlay accuracy and throughput, providing solutions for diversifying device structures.	<b>Litho Booster</b> [Alignment Station] Measures absolute grid distortion values quickly and with ultra-high precision for all wafers prior to exposure. Correction values are fed forward to the lithography system to ensure highly accurate overlay correction, contributing to improvements in semiconductor production yield and ROI (Return on Investment).	<b>AMI-5700</b> [Automatic Macro Inspection System] Achieving high-speed inspection and measurement of the entire wafer surface through batch imaging, this revolutionary device enables inspection and measurement with a single unit.

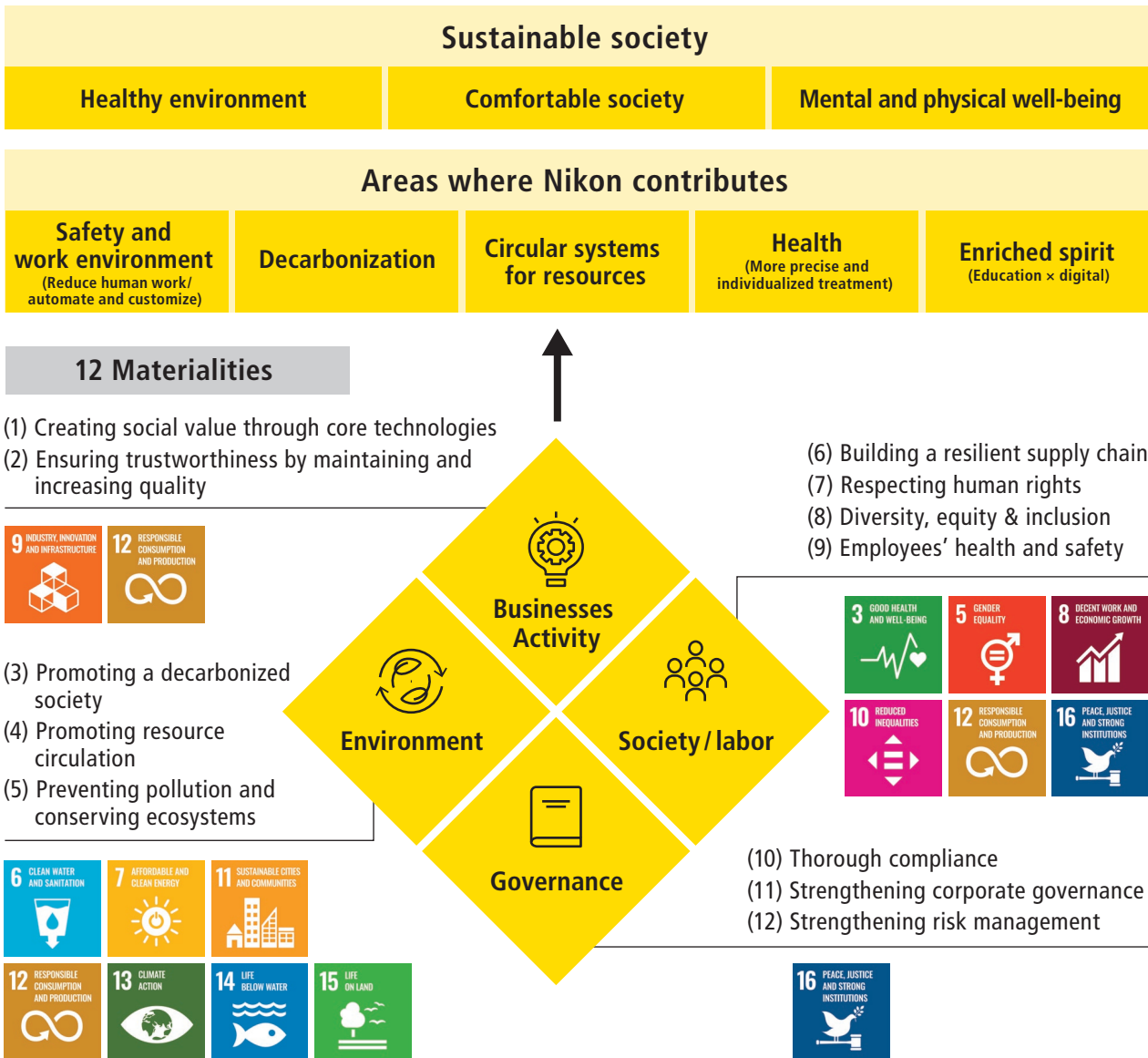
<b>Healthcare Business</b> Improving the quality of life of people around the world.	<b>AX with NSPARC</b> [Confocal based Super-Resolution Microscope] Enables everything from broad-range capturing of samples to capture and analysis of microscopic structures via super-resolution. Contributes to drug discovery and development as well as research fields such as brain science and immunology.	<b>ECLIPSE Ji</b> [Digital Inverted Microscope] With AI assistance for all tasks from observation to analysis, this benchtop inverted microscope improves data acquisition success rates through efficient imaging workflow.	<b>Cell &amp; Gene Therapy Contract Development and Manufacturing</b> Provides process development and manufacturing service for cells and gene therapy.	<b>Silverstone</b> [Ultra-Widefield Retinal Imaging Device with Integrated UWF-Guided Swept Source OCT] Capable of capturing an ultra-wide-field retinal image covering approximately 80% of the retina and a cross-sectional retinal image at any position in the ultra-wide-field image in one device.
	*Attaches to the ECLIPSE Ti2-E inverted research microscope.			

<b>Components Business</b> Providing products and solutions related to various sectors such as robotics and space.	<b>INDUSTRIAL SOLUTIONS BUSINESS</b>			<b>CUSTOMIZED PRODUCTS BUSINESS</b>	<b>GLASS BUSINESS</b>
	<b>Optical components</b> Provides total solutions from design consulting to mass production of optical components.	<b>MAR-M700MFA</b> [Multi-turn External Battery-free Absolute Encoder] Sensor device to detect absolute values of rotational displacement for robot arms and other devices. The first encoder in the world equipped with an all-solid-state battery*, achieving maintenance-free operations.	<b>VOXLS 40 C 450</b> [X-ray and CT Systems] Achieves non-destructive, high-precision inspection and measurement of components ranging from compact electronics parts to large items such as aerospace components.	<b>"NEXIV VMZ-S" Series</b> [Video Measuring Systems] Automatically measures the dimensions and shapes of a wide variety of parts with higher speed and precision.	<b>Optical systems for AKATSUKI</b> Designed and manufactured the optical systems for the lightning and airglow camera (LAC), 1μm camera (IR1), ultraviolet imager (UVI), and the lens of the 2μm camera (IR2).

<b>Digital Manufacturing Business</b> Innovative manufacturing with material processing technology.	<b>ADVANCED MANUFACTURING BUSINESS</b>			<b>Other Businesses</b>	<b>OPHTHALMIC LENSES BUSINESS</b>
	<b>"Lasermeister LM300A" "Lasermeister SB100"</b> [Metal 3D Printer, 3D Scanner] Combining the Lasermeister LM300A and Lasermeister SB100 yields corrective solutions for high-precision automated turbine blades and molds.	<b>"Lasermeister 100A" Series</b> [Metal 3D Printer] By enabling "additive laminate modeling" to add new forms to existing products—in addition to modeling from scratch, the main purpose of metal 3D printers—this series accommodates diverse metal processing needs.	<b>"Lasermeister 1000S" Series</b> [Laser Removal Processing Machine] Easily achieves difficult high-precision processing via ultrashort pulse lasers and onboard measurement, and contributes to such DX efforts as simplifying product quality management and reducing and unifying individual operations through utilization of measurement data during removal processing.	<b>Century AI 2.0</b> New-concept presbyopia lenses designed by simulating the desired vision. Offers comfortable vision with smooth focus.	

# Nikon's Sustainability

The Nikon Group aims to both contribute to a sustainable society and achieve sustainable growth for itself by putting into practice the Nikon philosophy of Trustworthiness and Creativity through our business activities. Specifically, by tackling 12 materialities in four areas of Business Activities, Environment, Society/labor, and Governance, we are committed to "create" value that contributes to solve social challenges and achieve Sustainable Development Goals (SDGs), and continually assess the impact our business has on the society, make improvements, and meet society's expectations to win trust.



Create value for society through businesses that are mindful of society and the environment

[FY2030 targets toward reaching net-zero\* by FY2050]

■ Reduce greenhouse gas emissions from business sites by 57% (compared to FY2022)

\*Reduce greenhouse gas emissions (Scope 1, 2, 3) across the value chain by 90%, and neutralize any remaining emissions through internationally recognized means.

[Major initiatives related to SDGs]

■ Reduced greenhouse gas emissions from business sites by 67% in FY2023 (compared to FY2013)

■ Achieved 69% of utilization ratios for renewable energy in FY2023 and advanced the target year for 100% from FY2050 to FY2030

■ Established a Nikon Global DEI Policy and implemented measures for all global sites with the aim of management that leverages diversity

■ Achieved 34.1% women among new-graduate hires (target: 25% or more) and 7.8% women in managerial positions (target: 7.5% or more) in FY2023